

# SAN PEDRO ELEMENTARY SCHOOL PROGRAM FOR NEW MAIN & CLASSROOM BUILDINGS – AUGUST 17, 2017

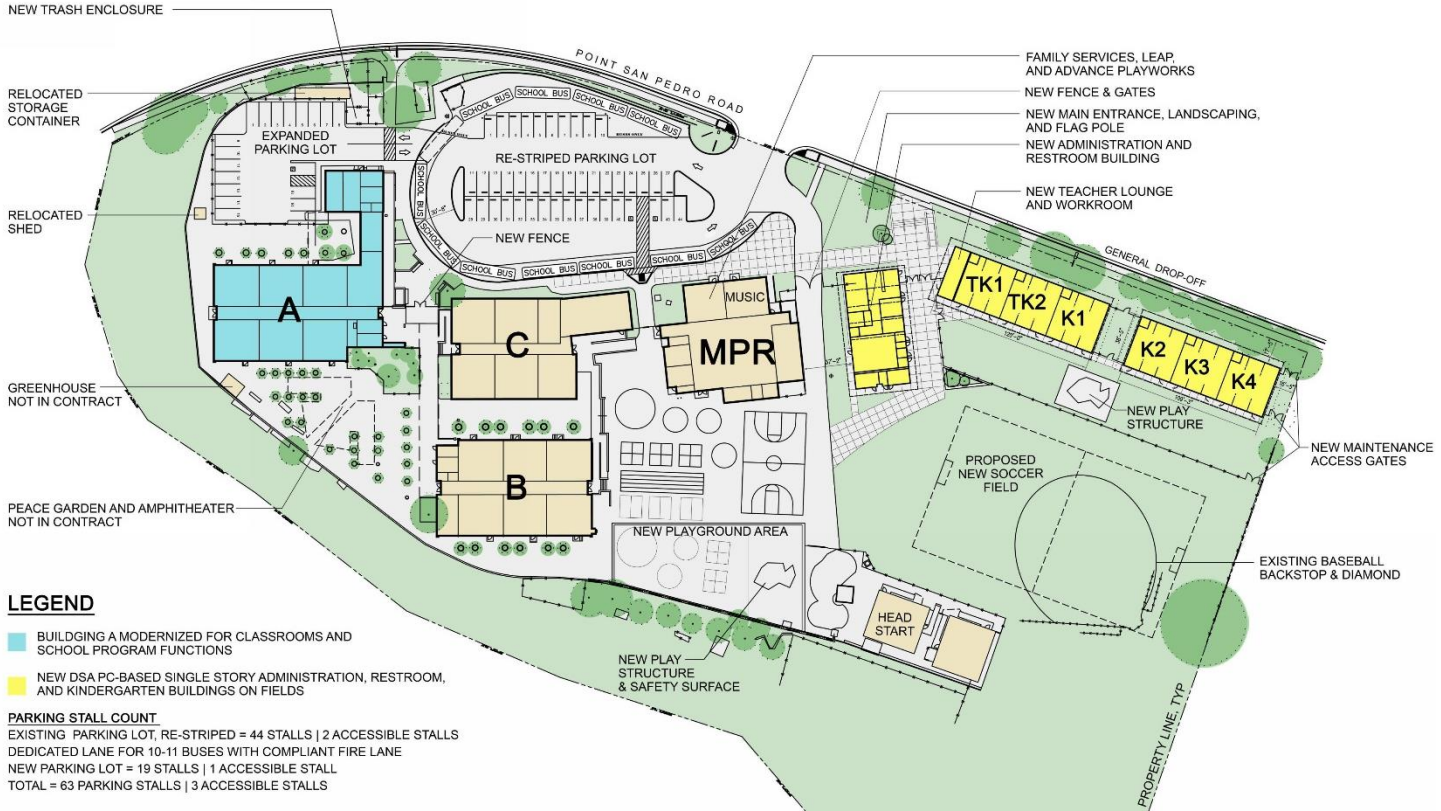


# FEATURES OF THE NEW DESIGN

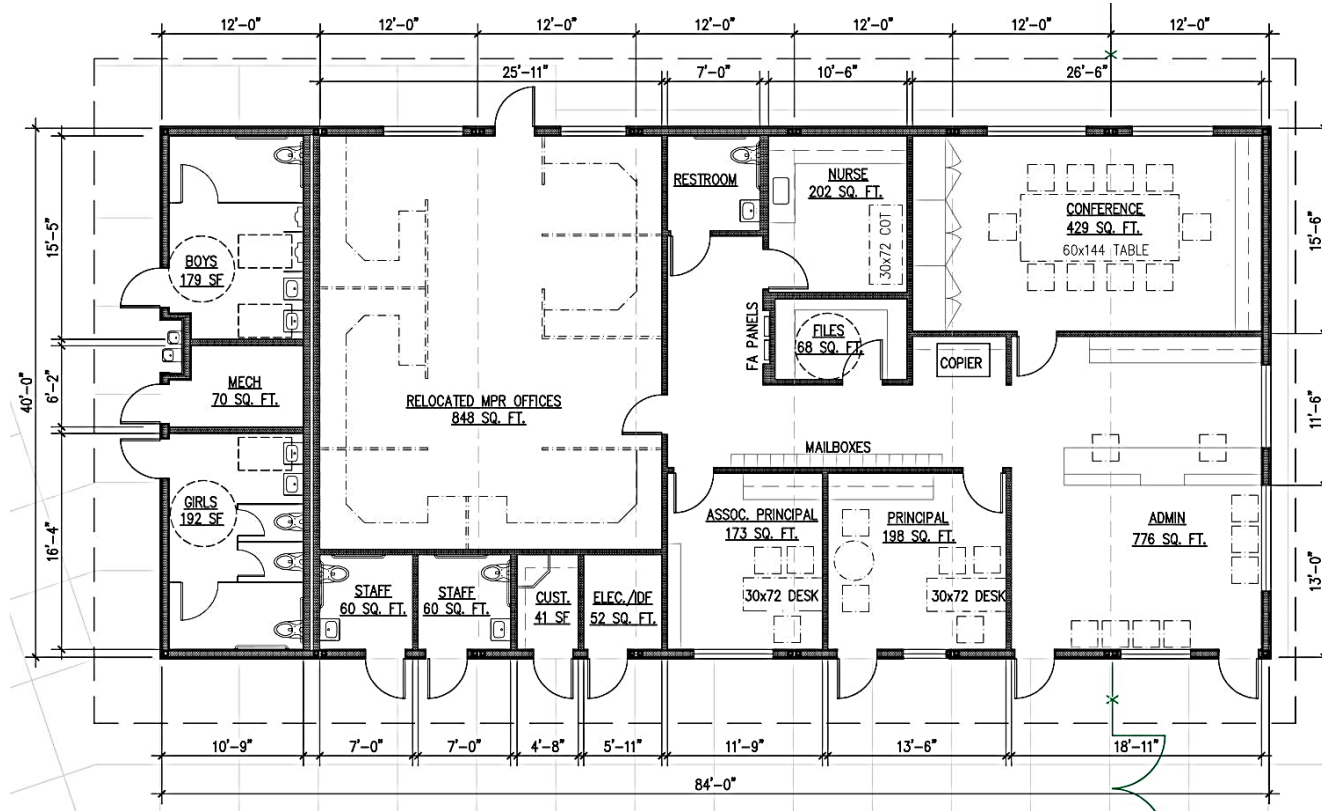
## KEY POINTS:

- Replace Portables with permanent classrooms
- Admin and campus entrance clear
- Updated drop-off
- Additional Parking
- Classroom Modernization

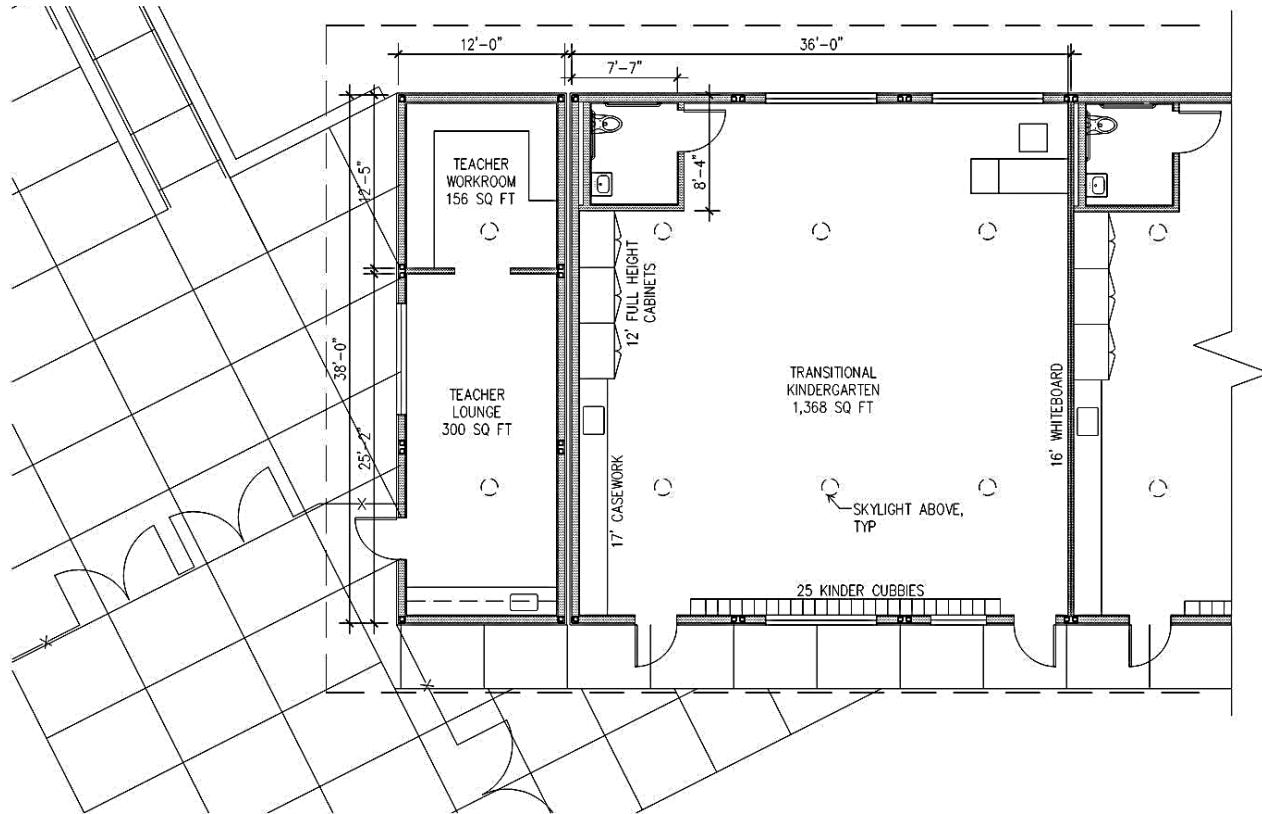
# NEW SITE PLAN



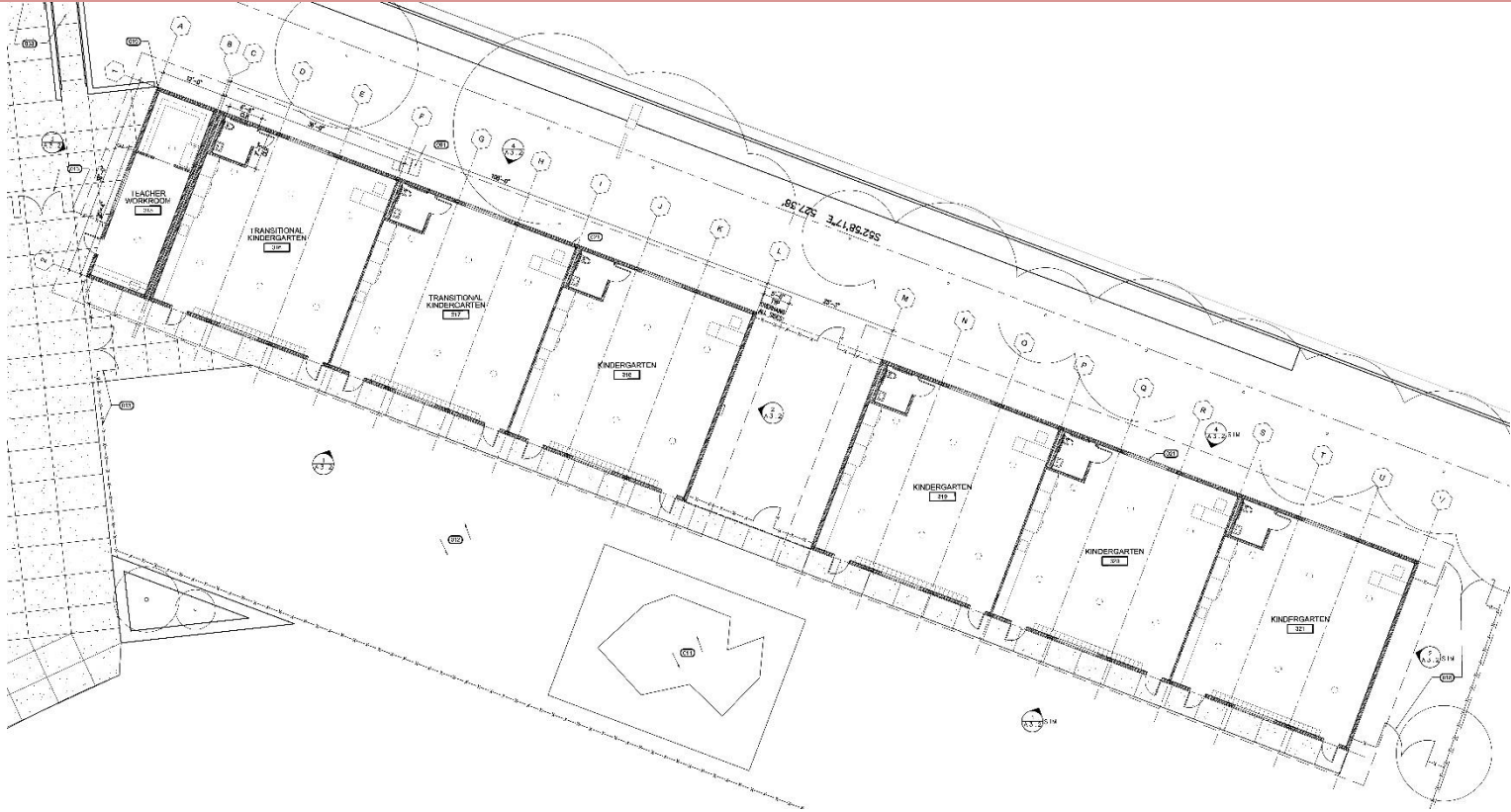
# NEW ADMINISTRATION BUILDING



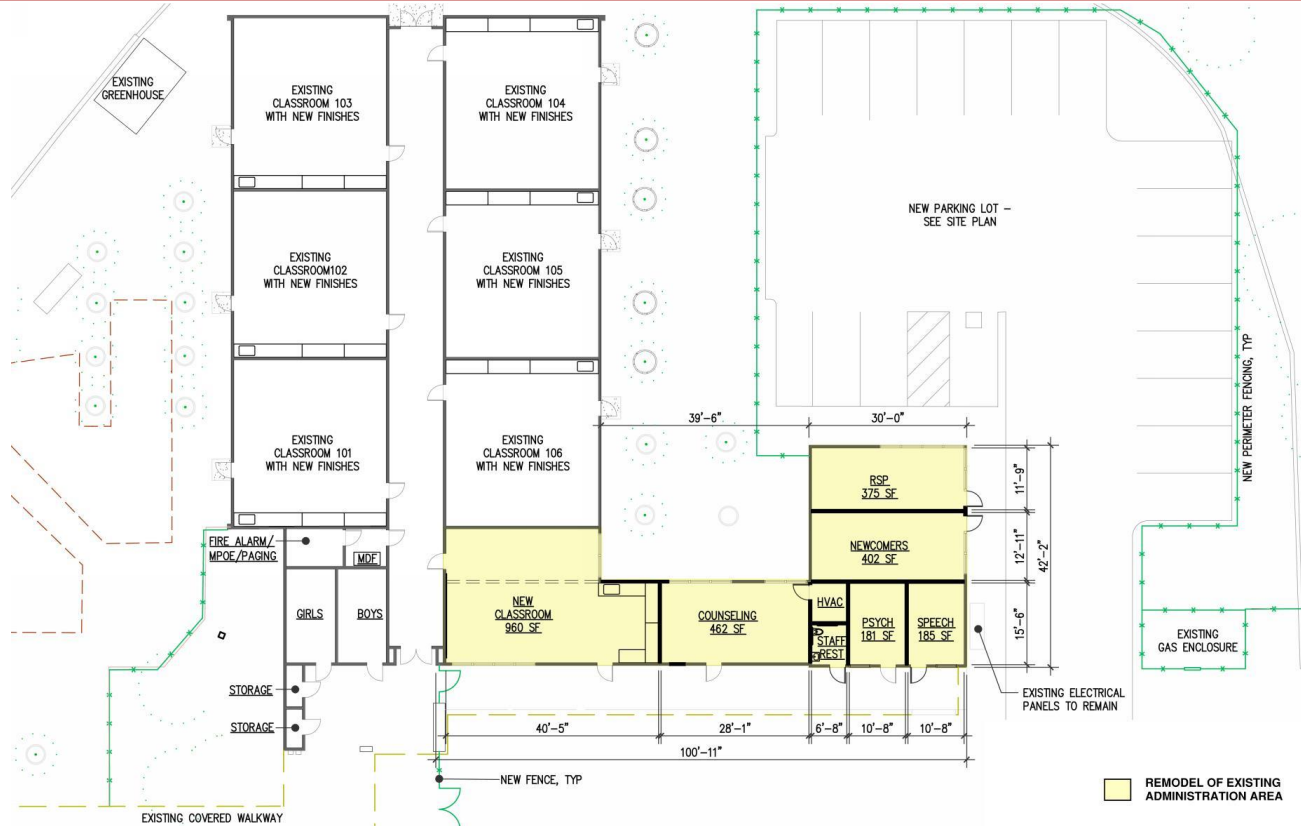
# NEW ADMINISTRATION & KINDERGARTEN CLASSROOM WING



# NEW ADMINISTRATION & KINDERGARTEN CLASSROOM WING



# MODERNIZATION AT BUILDING A



# NEW LANDSCAPE





# NEW MAIN ENTRANCE



# NEW MAIN ENTRANCE



# EXAMPLES FROM MODULAR COMPANY - EXTERIOR



# EXAMPLES FROM MODULAR COMPANY - INTERIOR



# TWO SAMPLE MODERNIZED CLASSROOMS

KENSINGTON ELEMENTARY SCHOOL



OLD MILL ELEMENTARY SCHOOL



Cost estimate is a little over **\$11.3 million** for new modulars and modernization.

The bond measure funds for San Pedro Elementary School is **\$11.77 million**.

## ADD ALTERNATES

We are considering:

1. Providing new HVAC in Building A classrooms
2. Replacing the ceilings and lighting in Building A classrooms
3. Replacing all casework in Building A classrooms
4. Replacing windows in Building A classrooms



*Thank you!*